

# Lettuce Leaf Scarf

by Janice Lynn for Madelinetosh

© Amy Hendrix, 2007  
All rights reserved



## Materials:

Yarn: approx 400 yards of fingering weight yarn – I used one skein of Madeline Tosh sock in the Lettuce Leaf colorway

Size: 9.25” by 54.5” after blocking

Gauge: 6.5 sts and 9 rows in stockinette to 1 inch

Needles: US size 1 (2.25 mm) or 2 (2.75 mm) or size to obtain gauge.

## Pattern:

Using the long tail method, cast on 60 stitches.

Knit 4 rows garter stitch (2 ridges).

End with smooth side of long tail cast on facing you. (If a different CO is used and the bumpy side of the CO is facing you, knit 1 more row.)

Row 1: Knit 2 sts, \*(k1, ssk, yo, k2, yo, k2tog, k2), repeat \* 8 more times, then k1, ssk, yo, k1.

Row 2 and all even rows: Purl back across.

Row 3: Knit 2 sts, \*(ssk, yo, k1, yo, k2tog, k1, yo, k2tog, k1), repeat \* 8 more times, then ssk, yo, k2.

Row 5: Knit 2 sts, \*(k7, yo, k2tog), repeat \* 8 more times, then k4.

Row 7: Knit 1 st, yo, \*(k2tog, k3, ssk, yo, k2, yo\*), repeat \* 8 more times, k2tog, k3.

Row 9: Knit 2 sts, \*(yo, k2tog, k1, ssk, yo, k1, yo, k2tog, k1), repeat \* 8 more times, yo, k2tog, k2.

Row 11: Knit 2 sts, \*(k1, yo, k2tog, k6), repeat \* 8 more times, k1, yo, k2tog, k1.

Row 13: Knit 2 sts, \*(k2, yo, k2tog, k3, ssk, yo), repeat \* 8 more times, k4.

Row 15: Knit 2 sts, \*(yo, k2tog, k1, yo, k2tog, k1, ssk, yo, k1), repeat \* 8 more times, yo, k2tog, k2.

Row 17: Knit 2 sts, \*(k4, yo, k2tog, k3), repeat \* 8 more times, k4.

Repeat Rows 1 through 18 until desired length. (Sample is 480 rows in length.) End with an even row.

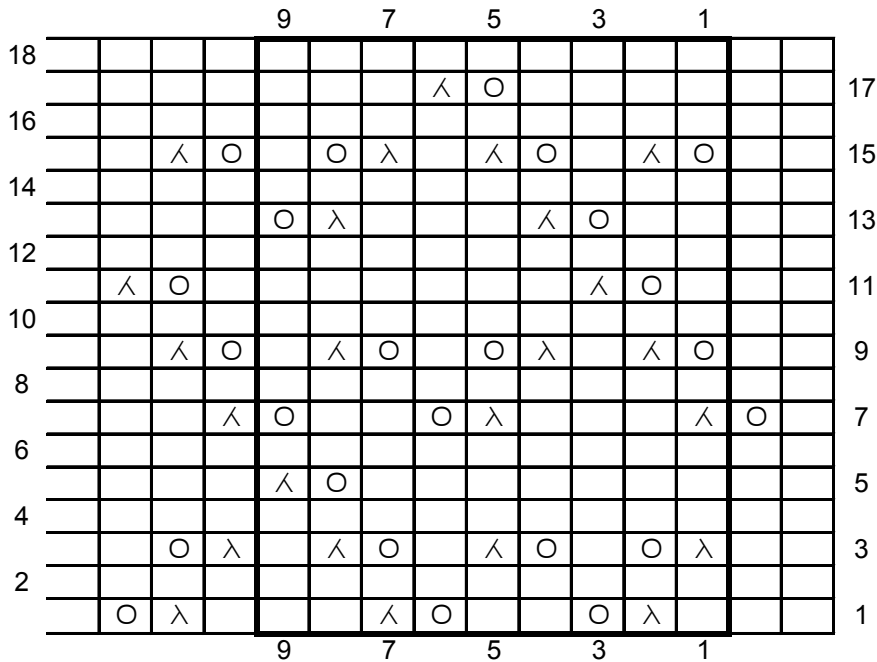
Knit 4 rows (2 garter ridges), bind off on right-side row.

Steam press to flatten the edges, or wet block and pin out to dry.

To convert to a shawl using the same pattern, increase the cast on stitches to 130, and follow the directions above working the pattern in parentheses 13 more times instead of 8 more times. This will result in a shawl about 20 inches in depth. Work to length desired, then work the garter rows at the end.

### Lace Chart

- Key**
- Yarn over
  - λ Slip knitwise, k1, pass slipped stitch over
  - ∧ Knit 2 stitches together



Stitches 1 through 9, enclosed in the dark border, show the pattern repeat.